

**TEST CONDITIONS**

Test Date	1/11/2023
Test Conductor	Kyle Giella
Boat Weight as Tested (lbs)	18000
Air Temperature (degrees F)	60
Elevation (ft)	0
Sea State	Calm
Wind Velocity range (mph)	5
Fresh/Salt Water	Saltwater
Fuel Level at Testing (gal)	100

**ENGINE SPECIFICATIONS**

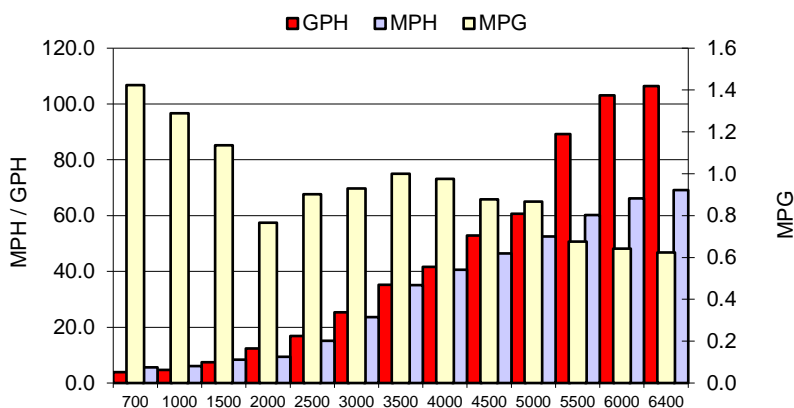
Number of Engines	2
Engine	V12 Verado
Horsepower	600
Cylinders	12
Drive or gear model and ratio	V12 AMS 2.00
Mounting Bolt Hole	1,1
Engine Height (in)	6.0,6.0
Engine Setback (in)	30.0,30.0
Engine Length (in)	30,30

**PERFORMANCE SUMMARY**

Top Speed (mph @ rpm)	69.2	6360
Acceleration 0 - 20 mph (seconds)	4.11	
Acceleration 0 - 30 mph (seconds)	5.98	

**PROPELLER SPECIFICATIONS**

Mercury Name	Verado 12
Material	Stainless Steel
Pitch	31.0,31.0
Number of Blades	4/3

**PERFORMANCE CURVE**

**BOAT SPECIFICATIONS**

Region/s sold	
Manufacturer	Cape Horn
Website	
Boat Model	39T
Boat Type	Offshore Saltwater
Material	Fiberglass
Length (ft)	39
Beam (ft)	11.23
Max hp Capacity	0
Fuel Tank Capacity (gal)	565
Steering Type	Joystick
Dry Boat Weight (lbs)	14600

**PERFORMANCE DATA**

RPM	SPEED	FUEL CONSUMPTION	FUEL CONSUMPTION	RANGE
RANGE	MPH	GPH	MPG	MILES
700	5.6	4.0	1.4	804
1000	6.1	4.7	1.3	728
1500	8.4	7.4	1.1	642
2000	9.5	12.3	0.8	433
2500	15.2	16.8	0.9	510
3000	23.6	25.4	0.9	525
3500	35.1	35.2	1.0	565
4000	40.6	41.6	1.0	551
4500	46.4	52.8	0.9	496
5000	46.4	60.6	0.9	490
5500	60.2	89.2	0.7	381
6000	66.1	103.1	0.6	363
6400	69.2	106.4	0.6	352
0	0.0	0.0	0.0	0

This data is internal to Brunswick.