



# PERFORMANCE NOTEBOOK

## Cape Horn 34XS



BOAT		ENGINE		OTHER SPECS	
<b>34XS</b>		<b>Quad Suzuki DF350ATX</b>		<b>Propeller</b>	
Material:	Fiberglass	Engine Type:	4-Stroke 6Cyl.	Material:	Stainless
Length:	34' 11"	HP:	350	Diameter/Pitch:	15.5 X 25.5
Beam:	9' 3"	Displacement:	267.9cu. In.	Number of Blades:	Twin 3 Blade
Weight:	8000 lb.s	Operating Range:	5700-6300	<b>Mounting Height</b>	
Maximum HP:	900	Weight:	727 lb.s	Hole Position:	#3 Hole
Fuel Capacity:	275 gallons	Lubrication:	Wet Sump	Jack Plate:	NA
Transom Height:	25"	Fuel Delivery:	Multi-Point EFI		
Steering:	Hydraulic	Ignition:	Solid State		

PERFORMANCE DATA					TEST CONDITIONS	
<b>RPM</b>	<b>MPH</b>	<b>GPH</b>	<b>MPG</b>	<b>RANGE</b>	Water Conditions:	1-2' Chop
IDLE	4.1	1.1	3.68	911	Wind Velocity:	5-10mph
1000	6.2	2.4	2.62	648	Air Temperature:	80 F
1500	8.3	4.5	1.85	459	Fuel Load:	270 gal.
2000	9.5	6.9	1.38	341	Weight Onboard:	2 person/FSG*
2500	16.5	11.5	1.43	354	*Full Safety Gear	
3000	26.1	16.0	1.64	405	<b>PERFORMANCE SUMMARY</b>	
3500	32.8	22.0	1.49	368	Top Speed	58.6 MPH
4000	38.8	26.6	1.46	361	0-25 Acceleration	7.94 Seconds
4500	43.4	32.1	1.35	335	Optimum Cruising	3000 RPM
5000	49.6	41.1	1.21	299	Range	405 Miles
5500	55.2	49.6	1.11	275	Best Cruising	3000 RPM
5900	58.6	57.6	1.02	252	Fuel Efficiency	1.64 MPG

Results may vary. Range based on 90% fuel capacity.

### FOR MORE INFORMATION CONTACT:

Fabbro Marine Group - Milton, FL  
[www.capehornboats.com](http://www.capehornboats.com)  
 (850) 626-2211

SUZUKI MARINE USA LLC - Tampa, FL  
[www.suzukimarine.com](http://www.suzukimarine.com)  
 (813)687-7200

**TEST CONDITIONS**

Test Date	5/11/2023
Test Conductor	Kyle Giella
Boat Weight as Tested (lbs)	10000
Air Temperature (degrees F)	80
Elevation (ft)	0
Sea State	Choppy
Wind Velocity range (mph)	25
Fresh/Salt Water	Saltwater
Fuel Level at Testing (gal)	50

**ENGINE SPECIFICATIONS**

Number of Engines	2
Engine	5.7 L V10
Horsepower	400
Cylinders	10
Drive or gear model and ratio	HD Camber 2.08
Mounting Bolt Hole	5,5
Engine Height (in)	3.5,3.5
Engine Setback (in)	26.0,26.0
Engine Length (in)	25,25

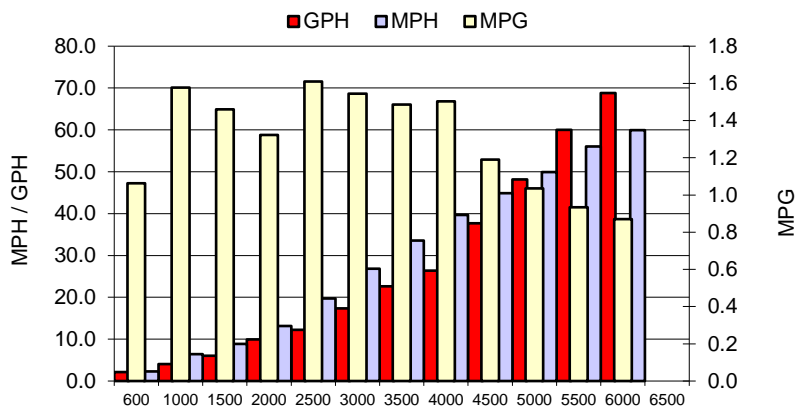
**PERFORMANCE SUMMARY**

Top Speed (mph @ rpm)	63.6	6288
Acceleration 0 - 20 mph (seconds)	3.78	
Acceleration 0 - 30 mph (seconds)	5.82	

**PROPELLER SPECIFICATIONS**

Mercury Name	Revolution X
Material	Stainless Steel
Pitch	23.0,23.0
Number of Blades	4

**PERFORMANCE CURVE**



**BOAT SPECIFICATIONS**

Region/s sold	
Manufacturer	Cape Horn
Website	
Boat Model	34T
Boat Type	Offshore Saltwater
Material	Fiberglass
Length (ft)	34.9
Beam (ft)	9.3
Max hp Capacity	900
Fuel Tank Capacity (gal)	275
Steering Type	Power Steering
Dry Boat Weight (lbs)	7700

**PERFORMANCE DATA**

RPM	SPEED	FUEL CONSUMPTION	FUEL CONSUMPTION	RANGE
RANGE	MPH	GPH	MPG	MILES
600	2.3	2.1	1.1	292
1000	6.4	4.1	1.6	434
1500	8.9	6.1	1.5	402
2000	13.1	9.9	1.3	364
2500	19.7	12.3	1.6	443
3000	26.9	17.4	1.5	425
3500	33.6	22.6	1.5	409
4000	39.7	26.4	1.5	413
4500	44.9	37.7	1.2	327
5000	49.9	48.2	1.0	285
5500	56.0	60.0	0.9	257
6000	60.0	68.8	0.9	240
6500	0.0	0.0	0.0	0
6800	0.0	0.0	0.0	0

This data is internal to Brunswick.